

# Halo: a Technique for Visualizing Off-Screen Locations

Patrick Baudisch

Microsoft Research<sup>1</sup>  
One Microsoft Way  
Redmond, WA 98052, USA  
+1 (425) 703 4114  
baudisch@microsoft.com

Ruth Rosenholtz

Palo Alto Research Center  
3333 Coyote Hill Road  
Palo Alto, CA 94304, USA  
+1 (650) 812 4390  
rruth@parc.com

## ABSTRACT

As users pan and zoom, display content can disappear into off-screen space, particularly on small-screen devices. The clipping of locations, such as relevant places on a map, can make spatial cognition tasks harder. Halo is a visualization technique that supports spatial cognition by showing users the location of off-screen objects. Halo accomplishes this by surrounding off-screen objects with rings that are just large enough to reach into the border region of the display window. From the portion of the ring that is visible on-screen, users can infer the off-screen location of the object at the center of the ring. We report the results of a user study comparing Halo with an arrow-based visualization technique with respect to four types of map-based route planning tasks. When using the Halo interface, users completed tasks 16-33% faster, while there were no significant differences in error rate for three out of four tasks in our study.

## Keywords

Halo, visualization, peripheral awareness, off-screen locations, hand-held devices, spatial cognition, maps.

## INTRODUCTION

People use maps in a number of tasks, including finding the nearest relevant location, such as a gas station, or for hand-optimizing a route. Using a map, users can easily compare alternative locations, such as the selection of restaurants shown in Figure 1a (as indicated by the barn-shaped symbols). Users can see how far away a restaurant is from the user's current location, and whether it lies close to other locations the user considers visiting. When users are required to use a zoomed-in view, however, for example to follow driving directions (Figure 1b), relevant locations disappear into off-screen space, making the comparison task difficult<sup>2</sup>. Comparing alternatives then requires users to zoom in and out repeatedly—a time-consuming process that can hardly be accomplished on-the-fly. Especially on small-screen devices, such as car navigation systems or personal navigation devices, this can severely limit a user's capability with respect to spatial cognition tasks.

Permission to make digital or hard copies of all or part of this work for personal or classroom use is granted without fee provided that copies are not made or distributed for profit or commercial advantage and that copies bear this notice and the full citation on the first page. To copy otherwise, or republish, to post on servers or to redistribute to lists, requires prior specific permission and/or a fee.

CHI 2003, April 5-10, 2003, Fort Lauderdale, Florida, USA.  
Copyright 2003 ACM 1-58113-453-3/02/0004...\$5.00.

## HALO

Halo addresses this issue by virtually extending screen space through the visualization of the locations of off-screen objects. Figure 2a shows a map navigation system that is enhanced with Halo. The figure shows the same detail map as Figure 1b, but in addition the display also contains the location information contained in Figure 1a. The latter is encoded by overlaying the display window with translucent arcs, each indicating the location of one of the restaurants located off screen. Figure 2b shows how this works. Each arc is part of a circular ring that surrounds one of the off-screen locations. Although the arc is only a small fragment of the ring, its curvature contains all the information required for locating the ring center, which is where the off-screen object is located. Although the display window shown in Figure 2a by itself contains no restaurant, the display informs users that there are five of them in the periphery and that the one located southwest is closest.

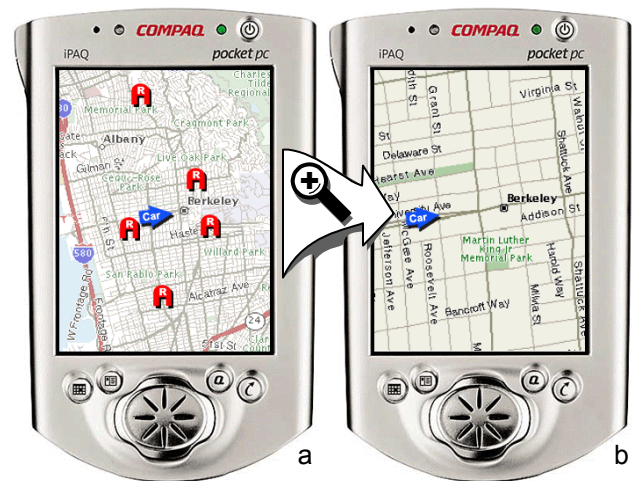


Figure 1: The problem: In order to make route decisions, users need to see the alternatives (a), but when drilling down to street information, relevant locations disappear into off-screen space (b).

Figure 3 shows how ring sizes are governed. As the map is panned, the restaurant sizes moves from on-screen to off-

<sup>1</sup> The work reported in this paper was carried out during the first author's affiliation with Xerox PARC, now PARC Inc.

<sup>2</sup> See also the concept of *desert fog* in zoomable interfaces [13].

screen. As the restaurant icon reaches the border region of the display window, a ring grows under the icon. As the restaurant moves further off-screen, ring radiuses are re-computed dynamically, so that the ring is always just big enough to reach into the border region of the display window while never occluding the display's central region.



Figure 2: (a) Enhancing the map from Figure 1 with Halo shows where in off-screen space the five restaurants are located. (b) How it works: each off-screen location is located in the center of a ring that reaches into the display window.



Figure 3: As this location is panned out of the display window, a ring emerges from its center. The ring grows as the location is panned further away.

In the remainder of this paper, we discuss related work, present the concept and the design choices behind Halo, present our findings resulting from interviews with users of personal navigation devices, and present a user study comparing Halo with a more traditional arrow-based visualization style. We conclude with a discussion of the benefits and limitations of our visualization technique.

### RELATED WORK IN VISUALIZATION TECHNIQUES

A substantial amount of research has been done on navigation aids, such as techniques for displaying driving [2] or walking directions [7]. While for following driving directions essentially any interface with an arrow was found to be sufficient [9], the contextual information required for route planning is more often supported using maps [14], e.g. for museum guides [1].

Several visualization techniques have been proposed for viewing large documents such as maps with limited screen resources. Multi-window arrangements, such as overview-plus-detail visualizations [16, 8], simultaneously display multiple views of the same map. However, the different scales of the individual views make it more difficult for users to integrate map information into a single consistent spatial mental model and require users to spend additional time reorienting when switching between views [3].

Focus-plus-context visualization techniques, e.g. fisheye views [11, 6], use only a single view onto the document, so that split attention is avoided. However, these techniques introduce distortion, which interferes with any task that requires precise judgments about scale or distance.

Another track of work has evolved around visualization techniques *pointing* into off-screen space. Figure 4 shows two everyday-life examples that use arrows to point to an off-screen highway and to off-screen game characters. Similar examples can be found in Pad++ [4] and in collaborative virtual environments, where lines emerging from a user's face help others see what the user is looking at [10]. By visualizing only selected off-screen content and by overlaying the visualization onto other display content, these "arrow-based" visualizations are very compact (see [12, 8] for additional research on semitransparent overlays). Their main limitation is that arrows convey only direction information, so that map navigation tasks would require arrows to be annotated with distances.

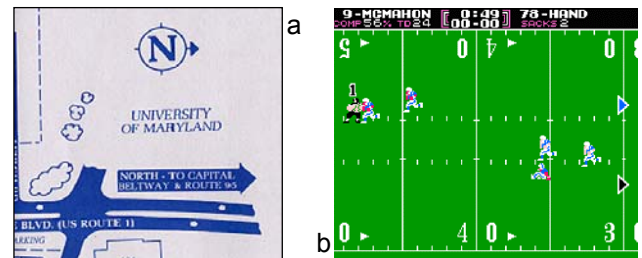


Figure 4: Related work: (a) The arrow on this map points to an unseen highway. (b) The arrows on the right point to football players off screen (© Nintendo '89).

Halo combines many of the advantages of the approaches listed above. It offers a single non-distorted view that allows users to inspect detail information without losing context. Unlike arrow-based visualizations, Halo does not require additional distance annotation; arcs provide full information about the location of off-screen objects, not only their direction. This eliminates the need for a scale indicator; the distance information encoded in the arcs always refers to the scale of the current scene. This allows users to carry out distance computations visually, which, as we show in the evaluation section of this paper, can improve user performance significantly.

### CONCEPT AND DESIGN DECISIONS BEHIND HALO

The concept behind Halo derives from techniques well known in cinematography and theatre [5]. In cinematog-

raphy, conventions used to imply off-screen space include the use of *exit and entry points* (character exiting or entering through one of these points), *point-of-view* (character on-screen looking somewhere off-screen), and *partially out of the frame* (part of an on-screen prop protrudes into off-screen space) [15]. In *partially out of the frame*, viewers recognize the prop as being only a portion of the whole object, which implies that the rest of the object has to be in off-screen space.

The main difference between Halo and arrow-based techniques can be explained using this classification. Arrows-based techniques implement a *point-of-view* technique, which can convey only directional information. Halo uses the *partially out of the frame* technique, and by “attaching” the off-screen location to the prop, the prop conveys the full off-screen location information.

The *prop* has to fulfill two requirements. First, to allow viewers to mentally fill-in the missing off-screen parts, it has to be an object that viewers know and recognize. Second, the object has to display features that allow viewers to understand its position in space well enough to know the location of the attached target. The ring shape used by Halo fulfills both requirements. A ring is a familiar shape, and furthermore it fulfills the second requirement in an extraordinary way, since a ring can be reconstructed from any fragment. This tremendous redundancy makes rings robust against various types of mutilation, such as cropping at the window border or partial occlusion by other rings.

Furthermore, humans are efficient at searching for lines of higher curvature among lines of lesser curvature [18]. Thus the rings provide an advantage in searching for closer off-screen locations. This can be expected to have a positive impact on task completion time for many tasks striving for path length minimization, such as the search for the closest gas station on a map.

### Halo implements a modified streetlamp metaphor

Our original concept for Halo was to represent off-screen locations as abstract “streetlamps” that cast their light onto the ground/map. This metaphor allowed us to derive four important properties for Halo. First, a streetlamp creates an aura, a large artifact which allows observers to infer the lamp’s existence even if it is not in view. Second, the aura created on the map is round, resulting in the benefits discussed above. Third, light overlays itself onto objects without occluding them; overlapping auras from multiple lamps aggregate nicely by adding up light intensities. Fourth, the fading of the aura with distance provides an additional visual cue about the distance of the streetlamp. An intense aura indicates a lamp located nearby; a weaker aura indicates a more distant lamp.

Our first prototype implemented this metaphor literally by using light auras on a dark background. The final design, (Figure 2) has undergone three modifications. First, in order to make it easier to perceive the halo curvature, we replaced the smooth transition at aura edges with a sharp

edge. Second, to minimize occlusion of window content and overlap between auras, we replaced the disks with rings. Third, we inverted the color scheme resulting in dark halos on a light background in order to better accommodate typical map material, which used a light background.

The concept of fading arcs representing more distant locations was implemented by using translucency. Halo renders the short arcs that represent nearby locations as nearly opaque. Longer arcs representing more distant location are rendered with increasing translucency, which also compensates for the additional visual weight that their additional length would otherwise cause.

Within the framework set by the streetlamp metaphor, we made a series of additional design decisions with the goal of maximizing the visualization of location, particularly the indication of distance, which is a central theme in Halo. The design described in the following subsections introduces a third visual cue for distance, arc length.

### Intrusion border and arc length

In order to limit the interference of arcs with display content, Halo restricts arcs to the periphery of the display. Only the space outside the *intrusion boundary* (Figure 5) is shared between arcs and content; the space *inside* the intrusion boundary is reserved exclusively for content.

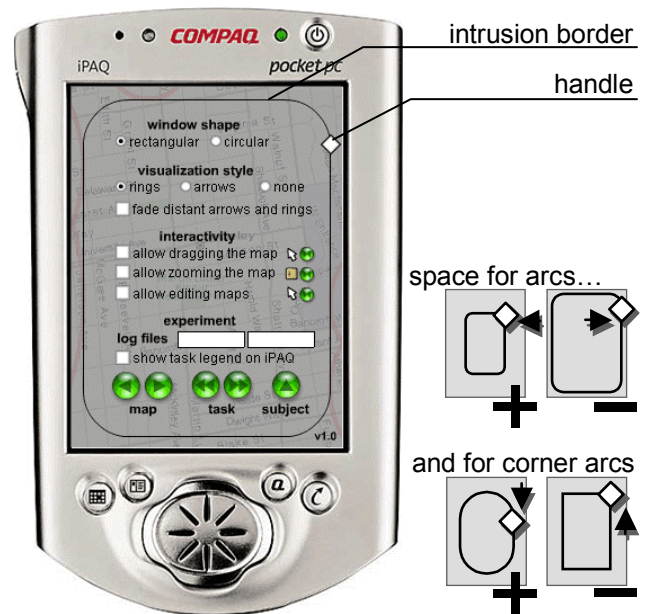


Figure 5: Halo preference dialog. By scaling the intrusion border (horizontal drag), users assigns space to arcs. Rounding corners (vertical drag) gives extra space to corner arcs.

The shape of the intrusion boundary was designed such that arc length would serve as another indicator for distance, in addition to curvature and opacity. Ideally, a longer arc would indicate that the represented object is further away than an object represented by a shorter arc. On a circular screen, as, for example, on a watch-type device, this is easily accomplished by using a circular

intrusion border. Here, arc length depends only on distance to the location, and, as Figure 6a illustrates, two arcs representing the same distance on such a device have the same arc length.



Figure 6: (a) On a circular display, arcs representing the same distance have the same length. (b) On a rectangular display, that is not always the case, because arcs in corners may be cropped.

On a non-circular display window, achieving correspondence between arc length and distance to the represented location requires additional attention. With a rectangular intrusion boundary, arcs cropped at a corner of the display window are shorter than arcs of comparable intrusion depth along an edge (Figure 6b). The accurate solution, i.e. computing intrusion depth on a per-arc basis as a function of the desired arc length, can make arcs intrude deeply into the display window, which conflicts with the notion of a space reserved for content. Halo therefore maintains the concept of an intrusion border limiting arc intrusion, but uses a rounded boundary (see Figure 5) to give extra intrusion depth and thus length to corner arcs.

#### Making Halo scale to large numbers of locations

Arcs mapping to similar positions on the intrusion border may overlap. In general, arcs are highly robust against overlap, but there are two cases where it can become an issue.

First, arcs of strongly collocated locations will yield arcs with large amounts of overlap along the entire length of the arc. Halo handles this by merging strongly overlapping arcs into a single *multi-arc* (Figure 7). Multi-arcs are created by rendering 2-3 thinner, concentric arcs, centered at their average location. Groups of four or more locations are indicated by a thick double ring. As the user pans towards a cluster, arc overlap will decrease, so that targets that are not exactly collocated will become individually accessible.

Second, scenarios involving a large number of off-screen locations can get cluttered, since the number of intersections between arcs grows quadratically with the number of arcs. For tasks where locations represent *alternatives*, Halo allows suppressing the rendering of locations that

fall below a certain rank-specific relevance threshold. For tasks that require users to visit *all* targets, Halo allows showing *all* targets by merging arcs into multi-arcs using bottom-up clustering.

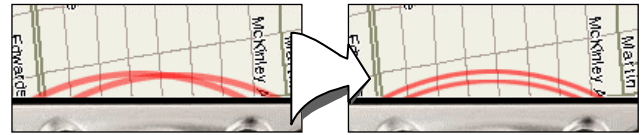


Figure 7: Overlapping arcs merge into double arc.

#### Design variables available for content visualization

Halo uses arc shape, arc length, and opacity for conveying location information. This means that a wide range of design variables, such as color, texture, and arc thickness, remain available for communicating additional properties of the respective off-screen locations, such as a restaurant's Zagat's rating. Applications designers may, for example, choose to overload such a relevance value to arc opacity (with the notion that relevance may compensate for distance), map it to arc thickness, or map it to color properties, such as hue.

In the next two sections, we move on to a preliminary field study and an experimental evaluation of Halo.

#### INTERVIEWS WITH NAVIGATION DEVICE USERS

In order to define realistic tasks for our user study, we conducted a preliminary field study. We interviewed 8 users who used five different personal navigation devices: 6 users of GPS devices and 2 users of personal digital assistants (PDAs) running map software. Participants were male researchers from three research labs who volunteered their participation. Each interview lasted between 10 and 40 minutes. We used an informal interview procedure covering the device, the application subjects used, and the subjects' tasks. In four cases, we obtained demonstrations of actual usage of the device. We also asked about specific problems with existing technology and suggestions for improvement. A summary of our results follows:

**Driving directions:** Two participants use *Garmin eMap* personal GPS navigation devices for driving directions ([www.garmin.com/manuals/etrex\\_vis.pdf](http://www.garmin.com/manuals/etrex_vis.pdf)). They plan routes using their desktop computer, e.g. using *Microsoft Streets & Trips*, upload the results into the *eMap* device, and then follow the turn-by-turn directions. **Car compass:** One participant uses his *Magellan* GPS device as a compass, because, as he explains, compasses do not work in cars. **Finding home:** One participant uses his *Garmin eTrex Summit* GPS device to find his way back to the car when cross-country skiing or hiking. The device tells him how far he is away from his car, allowing him to return on time. It also shows him which direction to go. **Data collection:** Two participants use their *eMap* and *eTrex* GPS devices to generate location data for their research project, but do not interact with the devices directly. **Map planning:** Two participants use their PDAs (no GPS support) to find locations while in the city. The *iPAQ* Pocket

PC user runs a pocket version of *Microsoft MapPoint*. The *Palm Pilot* user runs *Vindigo*, a subscription service that features restaurants as well as up-to-date content, such as movie theaters schedules. *Vindigo* allows visualizing locations on a map.

Only the PDA users used their devices for making route decisions on the fly. The GPS device users found the screens too small (160x120 b/w pixels on the *eMap*) and screen redraw too slow (up to several seconds). Applying on-the-fly changes to routes on the GPS devices would be possible but would require a copilot. When deriving tasks for our experimental comparison, this gave extra weight to the two PDA users, although tasks and experiences of all eight users were considered.

### Deriving tasks for the experimental comparison

Based on the interviews, we devised four experimental tasks that involved spatial cognition. Inspired by the hiker using his GPS device for returning to his car, we included a task where users would estimate the location and distance of off-screen locations. The second task was modeled after the iPAQ user who used his device for finding nearby restaurants. The iPAQ user also inspired the third task, namely organizing multiple locations into a single traversal. The fourth and last task was modeled after the desire of the Palm user to see traffic conditions integrated into the route planning process. The two PDA users and one of the driving direction users mentioned the need to zoom frequently, so we included maps of variable scales in the experiment. We did not include a task involving users following directions, since it did not involve a significant amount of spatial cognition. We will describe all four tasks in detail in the following section.

Based on the results of our field interviews, we now had realistic tasks that would support a fair experimental comparison between different approaches to displaying contextual location information on a handheld device.

### USER STUDY: HALO VS. ARROWS

In our user study, we compared Halo with an interface using an arrow-based visualization. Users had to complete four tasks. The main goal of this study was to determine which interface would allow users to complete their task fastest.

### Interfaces/apparatus

Figure 8 shows the Arrow interface and the Halo interface used in the study. Both interfaces were designed for a Compaq iPAQ Pocket PC, which was emulated on the screen of a desktop computer. Emulation was necessary because for one task subjects were required to select locations outside of the iPAQ. For the study, we re-implemented an earlier Java version of Halo in Macromedia Flash™, extended it with features required for the study, and inserted functions logging the user's selections, task completion times, and error rates. The Flash version was also used to create the screenshots in this paper and the video figure. The emulated iPAQ screen measured 3" x 4", roughly 33% bigger than its real-life

size. The laptop computer screen was a 12" screen run at 1024 x 768 pixels, 105 dpi resolution. Users made selections required by the tasks using an external mouse.

The Halo and the Arrow interfaces differed with respect to their way of indicating the location of off-screen locations. The Halo interfaces used red arcs for that purpose, as described in this paper. Instead of the arcs, the Arrow interface visualized off-screen locations by using arrows pointing along a line from the center of the screen to the off-screen locations and lined up with the border of the display window (see Figure 8a). Arrows were of the same color and opacity as the arcs of the Halo interface. Unlike the arcs, arrows were annotated with a three-digit number indicating the distance of the off-screen location from the display border. In order to allow users to interpret the number, there was a scale indicator at the bottom right inside the display window.

The Halo interface differed in two ways from that described in previous sections. First, to provide a clearer comparison of the arc and arrow cues to off-screen location, the fading of arcs was disabled, so that all arcs were of the same opacity. Second, in order to prevent users from obtaining the requested information through navigation, zooming and panning were disabled. Individual maps used scales ranging from 110m to 300m per cm on the screen. In order to provide users with a visual cue for the current zoom factor, a map was used as the backdrop, which scaled with the zoom. No other task information was available from the map. During the study, off-screen locations were never close enough to each other to require the use of the multi-arcs described earlier.



Figure 8: (a) The Arrow interface and (b) the Halo interface, both showing the same map. Which of the 5 off-screen restaurants is "closest" to the car?

### Tasks

Users had to complete four tasks. Figure 9 shows example maps for each task. The users were instructed, "Complete each map as quickly as possible while maintaining reasonable accuracy." Distances in the task were 'as the crow flies', not distances along streets depicted in the map.

**The “Locate” task:** The user’s task was to click in the off-screen space at the expected location of the off-screen targets indicated by each of the five red arrows/arcs (Figure 9a). Users were allowed to locate targets in any order; the system automatically picked the closest match.

**The “Closest” task:** Each map contained a blue car icon and five red arrows/arcs representing restaurants (Figure 9b). The user’s task was to click on the arrow/arc corresponding to the off-screen location closest to the car.

**The “Traverse” task:** Each map contained a blue car icon and five target indicators. Targets could be either off-screen, indicated by red arrows/arcs, or on-screen (Figure 9c). The user’s task was to select all five targets in order, so as to form the shortest delivery path, beginning at the car.

**The “Avoid” task:** The user’s task, as “ambulance dispatcher,” was to select the hospital farthest from traffic jams, thus most likely to be accessible to an incoming ambulance. Each map contained indicators of five on- or off-screen traffic jams, and three blue cross-shaped icons representing hospitals (Figure 9d).



Figure 9: Examples of maps used in the four tasks

### Procedure

12 users participated in the study, including the second author of this paper, unpracticed with the use of the interface and tasks. There was no significant or observable difference between the performance of the second author and other users in the study and the author is excluded from any discussion of user preferences. We used a within-subject experimental design, i.e., each subject carried out all four tasks on both interfaces. In order to avoid sequence effects, task order, and interface order on a particular task, were counterbalanced between subjects.

Users received verbal instruction and four training maps for each interface, followed by eight timed maps. Upon completing each task, they answered questions about their interface preference for that task, and their impression of how confusing/clear the interfaces were. Upon concluding all tasks, users were asked to rate difficulty for each task, and to specify their overall interface preference.

Users were interviewed upon completion of the tasks. The overall session took around 30 minutes.

### Hypotheses

Our first hypothesis was that subjects would complete each task faster with the Halo interface than with the arrow-based interface. This hypothesis was based on the assumption that Halo arcs would allow for a faster perception of the represented locations than the textual annotation used by the arrow-based interface, and in particular that the gestalt of Halo arcs would help subjects perceive multiple locations at a glance. This, we expected, would help subjects form a spatial model, which would enable easier distance comparisons. Our second hypothesis was that subjects would experience an increase in task speed without an increase in error rate. Our third hypothesis was that higher efficiency would also result in higher subjective satisfaction with the Halo interface.

### Results

**Task completion time:** Table 1 summarizes the average time subjects required to complete a map, for each task and interface. Confirming our first hypothesis, subjects achieved better task completion times in all four tasks when using the Halo interface. In the Locate task, task completion was 16% faster when subjects used the Halo interface. In the Closest task the difference was 33%, in the Traverse task 18%, and in the Avoidance task 16%. These results were significant, as discussed in more detail below.

Task	Arrow interface	Halo interface
Locate	20.1 (7.3)	16.8 (6.7)
Closest	9.9 (10.1)	6.6 (5.3)
Traverse	20.6 (14.1)	16.8 (8.7)
Avoid	9.2 (4.7)	7.7 (5.8)

Table 1: Average task completion times in seconds (and standard deviations)

We evaluated these differences in completion time using a repeated-measures ANOVA for each task. In each case, our model included factors of interface style (arcs/arrows), subject, map, order (arrows-first, arcs-first), and interaction effects between interface style and each of the other main factors. We used a conservative criterion for significance due to the large number of tests involved. Unless otherwise stated, all significant effects are significant at the  $p < .001$  level. Due to space constraints, we present here only effects of interest, i.e. those involving interface type. Where appropriate, ANOVA’s were performed on log response time. We also assumed binomially distributed data for percent correct data, and Gamma distributed data where appropriate for distance error data.

As mentioned above, the main effects of interface were significant for the Locate ( $F(1,141)=21.50$ ), Closest ( $F(1,140)=54.85$ ), and Avoid ( $F(1,140)=18.18$ ) tasks, and marginally significant for the Traverse task

( $F(1,140)=10.28$ ,  $p=0.0017$ ). We did find significant subject x interface interactions for the Closest ( $F(9,140)=4.01$ ) and Traverse ( $F(9,140)=3.75$ ) tasks. Closer examination revealed that in both cases, the interactions were the result of 2 out of 12 subjects (a different 2 for the 2 tasks) performing faster with the arrows than with the arcs, while all other subjects showed the opposite pattern. This interaction does not greatly affect our interpretation of the main effects.

From subject response, the higher cognitive load for localizing arrow targets seemed to be the major factor influencing the Halo interface performance advantage over the arrow-based interface, with 7/11 subjects volunteering that arrows “required too much math.” Furthermore, two subjects volunteered that while some work was required for both interfaces to get a sense of the configuration of all targets, with the Halo interface this configuration would *persist*, which made tasks like the Traverse and Avoid tasks, where subjects had to acquire a mental model of the space, much easier.

**Error rate:** Table 2 shows the error for each of the four tasks. Due to the different nature of the four tasks, error was computed differently for each task. For the Closest and the Avoid tasks, which required subjects to choose among a small number of choices, we analyzed their percent correct performance. For the Locate task, we measured error as the Euclidian distance between the subject’s location estimate and the actual location of the off-screen location. For the Traverse task, we used the difference in length between the traversal subjects chose and the optimal traversal for the respective map. The average total distance in the Locate task was 98 pixels, and the average optimal distance in the Traverse task was 1156 pixels.

For the Locate task, the ANOVA did find a significant main effect of interface on error ( $F(1,1039)=14.34$ ), although the difference in error, the accuracy of the Halo interface was 5 pixels worse in average, was comparably small. For the Closest, the Traverse, and the Avoid tasks, Table 2 shows a reduction in error with the Halo interface, but none of these differences were significant (Traverse:  $F(1,166)=0.55$ ,  $p=.54$ ; Closest:  $F(1,154) = 0.05$ ,  $p=.18$ ; Avoid:  $F(1,154)=0.12$ ,  $p=.27$ ). This confirms our second hypothesis that faster task completion with the Halo interface would not come at the expense of error, for all tasks except the Locate task.

Task	Arrow interface	Halo interface
Locate	23.5 pixels (21.6)	28.4 pixels (33.8)
Closest	22% (42%)	21% (41%)
Traverse	97.4 pixels (94.7)	81.0 pixels (96.7)
Avoid	15% (35%)	14% (34%)

Table 2: Error rate (and standard deviations).

*Dependence of error on distance:* For the Locate task, we found, for both interfaces, a clear linear correspondence between distance and error, as well as a significant inter-

action between interface and distance ( $F(1,1039)=114.58$ ). Regression analysis yielded the relationships:  $Error(pixels) = 6.6 + 0.17*dist$  for arrows; and  $Error(pixels) = -6.4 + 0.37*dist$  for arcs. Since for Halo the incremental change in curvature gets smaller with growing radius, the distance awareness provided decreases with distance, and the error for arcs increases faster with distance than the error for arrows ( $p<.001$ ).

*Dependence of error on direction:* We analyzed whether error depended on whether arcs were cropped at the corner of the display window. We found subjects to have twice as much error, on average, when the arc crossed a corner ( $M=52.3$  pixels,  $SD=44.4$ ) than when the arc lay along one side of the display ( $M=23.3$  pixels,  $SD=28.7$ ) ( $F(1,511)=41.6$ ).

*Distance error vs. direction error:* To better understand the strengths and weaknesses of the two interface styles, we separated radial *distance* errors from *direction* errors, with *direction* error measured perpendicular to radial *distance*. This showed that the higher error in the locate task came mainly from the distance error. Subjects had significantly more bias towards underestimating distance with the arcs ( $M= -19.0$  pixels,  $SD=38$ ) than with the arrows ( $M= -0.6$  pixels,  $SD=30$ ) ( $F(1,1074)=81.80$ ). There was no significant difference between arcs and arrows in direction errors ( $F(1,1022)=1.70$ ,  $p=.81$ ,  $M(arcs)=5.9$ ,  $SD=9.4$ ,  $M(arrows)=6.6$ ,  $SD=7.5$ ). These results are in line with our expectations, given our knowledge of the interface.

**Subjective preference:** For all four tasks, the majority of subjects who expressed a clear preference (see Table 3) preferred the Halo interface, which confirms our third hypothesis that improved efficiency would translate into preference. Overall, 6/11 subjects preferred the Halo interface, compared to 3/11 for the Arrow interface, with 2/11 having no overall preference.

Task	Arrow interface	Halo interface
Locate	2	8
Closest	3	6
Traverse	1	7
Avoid	2	4

Table 3: Number of subjects who expressed a clear preference for the respective interface. Remaining of 11 subjects expressed no preference.

Two subjects, one of whom preferred arrows and the other of whom had no preference, reported that they liked arrows because they could “just read the numbers... they just tell me what to do—I don’t need to guess.”

## Discussion

Overall, our user study confirmed our hypotheses and provided evidence for Halo’s usefulness in tasks involving spatial reasoning. Only our hypothesis regarding the error rate for the locate task was not borne out—the Halo interface did result in lower location accuracy than the

Arrow interface. As our analysis showed, the difference in accuracy was caused almost exclusively by subjects underestimating distances when using the Halo interface. Looking for an explanation, the comment of one subject seems relevant, who mentioned that the arc *felt* more like being part of an *oval*, rather than as part of a ring—which would be a valid explanation for the biased perception of distance. While this effect requires more detailed examination, we plan to address the issue by adapting Halo’s geometric model to the mental model of the users. This means replacing the rings used in the current version of Halo with *ovals*, the parameters of which will be determined by the biases measured in the user study.

The other issue that needs to be addressed is subjective satisfaction. Despite the superiority with respect to task completion time, not all subjects preferred the Halo interface. Based on subjects’ comments during the experiment, it seems that the *perceived* accuracy of the Halo interface may have been the reason for this. 6 subjects reported either that they felt they were more accurate with arrows, or they were uncertain of their accuracy with the arcs. We feel that this effect may partially be explained by the fact that interface panning and zooming was disabled in the experiment, so that subjects never got a chance to verify their model of off-screen geometry by panning the involved locations onto the screen. We expect some of this insecurity to go away with practice, particularly with the visual feedback that users get through panning and zooming.

## CONCLUSIONS

In this paper, we presented Halo, a visualization technique providing users with location awareness of off-screen objects. Halo provides a single non-distorted view of a document, overlaid with location information for the off-screen locations. Unlike arrow-based visualizations, Halo does not require explicit distance annotation; the distance information is encoded in the arcs themselves and directly incorporates the scale of the scene.

We have presented a user study evaluating Halo in comparison to an arrow-based visualization technique. Tasks were picked based on the results of a field study, also briefly presented in this paper. Halo led to significant timesaving (16% to 33%) in the four experimental tasks, as well as higher subjective satisfaction.

In future work, we plan to explore the application of Halo in the area of real-time tasks, such as simulations or highly interactive games where Halo arcs will be used to continuously update users about the location of moving objects in the user’s periphery.

## Acknowledgments

Halo is an outgrowth of our work with Polle Zellweger, Jock Mackinlay, Lance Good, and Mark Stefik on City Lights techniques for providing awareness of and support for navigation to off-screen objects. Thanks also to Scott Minneman and Allison Woodruff for their comments on earlier versions of Halo.

## REFERENCES

1. Abowd, G.A., Atkeson, C.G., Hong, J., Long, S., Kooper, R., Pinkerton, M. Cyberguide: a mobile context-aware tour guide. *ACM Wireless Networks* 3:421–433, 1997.
2. Agrawala, M. and Stolte, C. Rendering effective route maps: improving usability through generalization. In *Proc. Siggraph’01*, pp. 241–249.
3. Baudisch, P., Good, N., Bellotti, V., Schraedley, P. Keeping Things in Context: A Comparative Evaluation of Focus Plus Context Screens, Overviews, and Zooming. In *Proc. CHI 2002*, pp. 259–266.
4. Bederson, B. B., and Hollan, J.D. Pad++: A zooming graphical interface for exploring alternate interface physics. In *Proc. UIST’94*, pp. 17–26.
5. Burch, N. 1983. *Theory of Film Practice*, London: Praeger Publishers Inc.
6. Carpendale, M.S.T., Montagnese, C. A. Framework for Unifying Presentation Space. In *Proc. UIST’01*, pp 61–70.
7. Chewar, C. M., McCrickard, D.S. Dynamic route descriptions: tradeoffs by usage goals and user characteristics. In *Proc. Smart Graphics ’02*, pp 71-78.
8. Cox, D., Chugh, J., Gutwin, C., and Greenberg, S. (1998). The Usability of Transparent Overview Layers. In *Proc. CHI ’98*, pp. 301–302.
9. Ekman, I., Lankoski, P. What should it do? Key issues in navigation interface design for small screen devices. *CHI’02 Extended Abstracts*, pp. 622–623.
10. Fraser, M., Benford, S., Hindmarsh, J., and Heath, C. Supporting awareness and interaction through collaborative virtual interfaces. In *Proc. UIST’99*, pp. 27–36.
11. Furnas, G. Generalized fisheye views, in *Proc. CHI ’86*, pp. 16–23.
12. Harrison, B.L., Kurtenbach, G., Vicente, K.J. An Experimental Evaluation of Transparent User Interface Tools and Information Content Evaluation. In *Proc. UIST ’95*, pp.81–90.
13. Jul, S. and Furnas, G. Critical zones in desert fog. Aids to Multiscale Navigation In *Proc. UIST 99*, pp.97–106.
14. Levine, M.; Marchon, I. and Hanley, G. The Placement and Misplacement of You-Are-Here Maps. *Environment and Behavior* 16(2):139–157, 1984.
15. Marsh T. and Wright, P. Using cinematography conventions to inform guidelines for the design and evaluation of virtual off-screen space. In *AAAI 2000 Spring Symp. Ser. Smart Graphics*, pp. 123-127, 2000.
16. Plaisant, C., Carr, D., & Shneiderman, B. Image-Browser Taxonomy and Guidelines for Designers, *IEEE Software*, 12(2):21–32, 1995.
17. Rosenholtz, R. Search asymmetries? What search asymmetries? *Perception & Psychophysics* 63(3): 476–489.
18. Treisman, A. and Gormican, S. Feature analysis in early vision: Evidence from search asymmetries. *Psychological Review*, 95(1):15–48.